

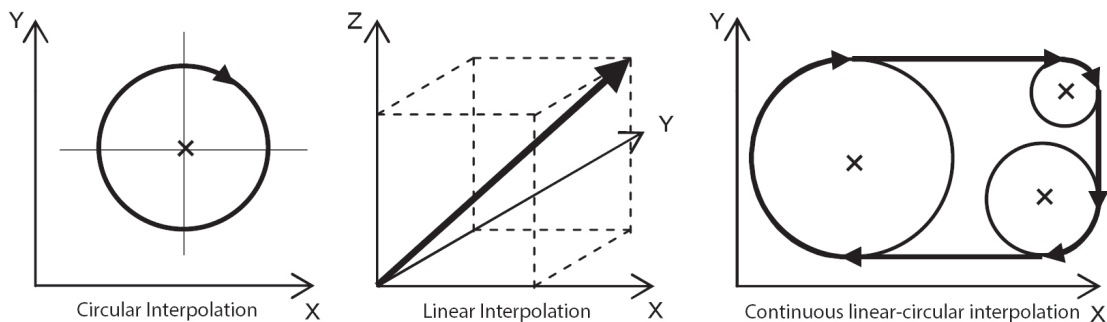
4 Steps to Choosing a Motion Controller

1. Determine

- How many axes need to be controlled?
- Does the movement need to be coordinated?

2. Define

What is the motion set needed: linear motion, circular interpolation, or both?



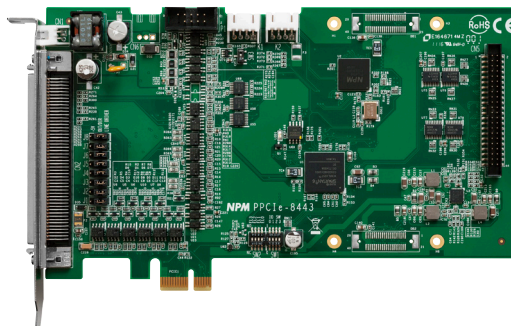
3. Consider

- Is a feedback device needed for output control?
- What types of I/O switches or signals will help synchronize the motion?
- Will you require onboard control or an external data program for programming?

4. Approach

Based on your programming capability, will your ideal controller be:

- an FPGA/ASIC for programming control over every aspect?
- a custom or off-the-shelf board that is ready to program?
- a plug-and-play control box that requires less programming to operate?



Contact Nippon Pulse for assistance in choosing a motion controller!

More information: nipponpulse.com/assets/files/Choosing_a_controller_to_fit_your_needs_whitepaper.pdf