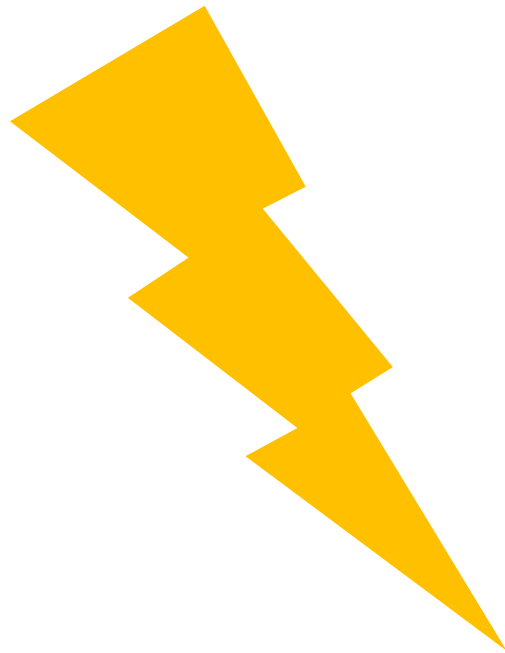

Nippon Pulse Flash Programming Manual



COPYRIGHT © 2018 NIPPON PULSE AMERICA, INC.,
ALL RIGHTS RESERVED

NIPPON PULSE AMERICA, INC. copyrights this document. You may not reproduce or translate into any language in any form and means any part of this publication without the written permission from NIPPON PULSE.

NIPPON PULSE makes no representations or warranties regarding the content of this document. We reserve the right to revise this document any time without notice and obligation.

1. Programming via USB Communication

Can I perform the upgrade?

See the checklist below to see whether or not your desired firmware upgrade is capable via USB. If any one of these items is not satisfied, you will need to send the unit to Nippon Pulse for in-house programming.

- ✓ One of the product's communication interfaces is USB.
- ✓ The last two digits in the current firmware version number are "BL." To get the current firmware version, connect to the device from a PC and send the **VER** command.
- ✓ The last two digits in the new firmware version number are "BL."

USB driver

The boot-loader software requires the use of the Performax USB driver (version 1.3 or above). If you need to upgrade your Performax USB driver, you will need to manually link your USB device to the new driver.

Boot-Loader Software

With the latest USB driver installed and linked to your device, open the "SOFT-EXE-BOOTLOAD-USB-XXX.exe" file. Make sure there are no other USB devices connected to your PC.

Boot-load Mode

If your device is not in boot-load mode, the "Set to Boot-load Mode" selection box will be enabled. Click "Set." If your device is already in boot-load mode, the screen will have the appearance of Figure 1.2 instead.

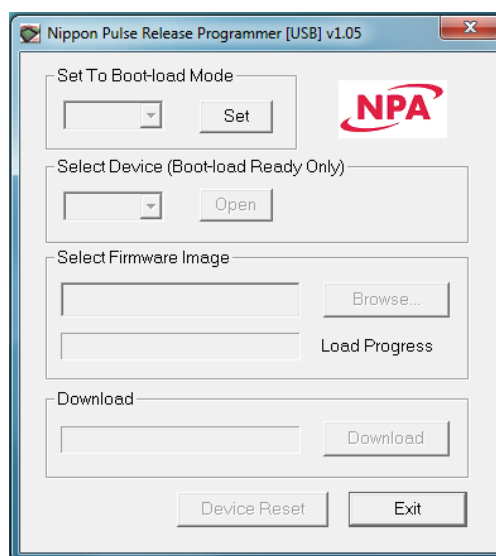


Figure 1.1

Downloading Firmware

1. Open/close boot-load connection. When in boot-load mode, the device name will always be "arusb~"
2. Browse for new firmware file (.hex).
3. Wait until the firmware file successfully loads into the software.
4. Download new file (.hex).
5. After the firmware is downloaded, reset the device. You may need to manually link your USB device to the latest USB driver.

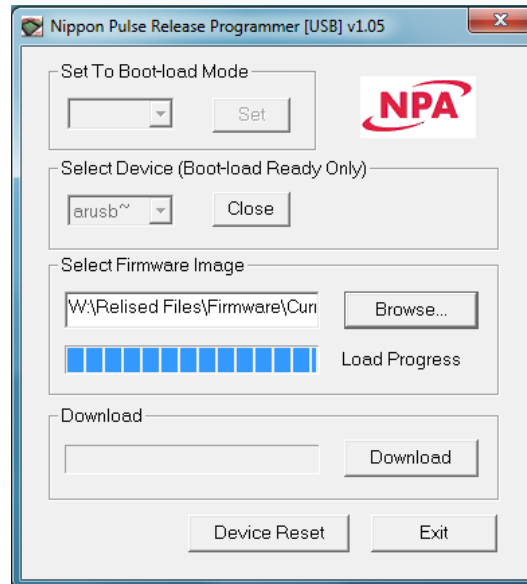


Figure 1.2